



FlowVue is a network traffic analyzer that monitors flow data and helps identify policy violations and security threats, while providing valuable insight for network optimization



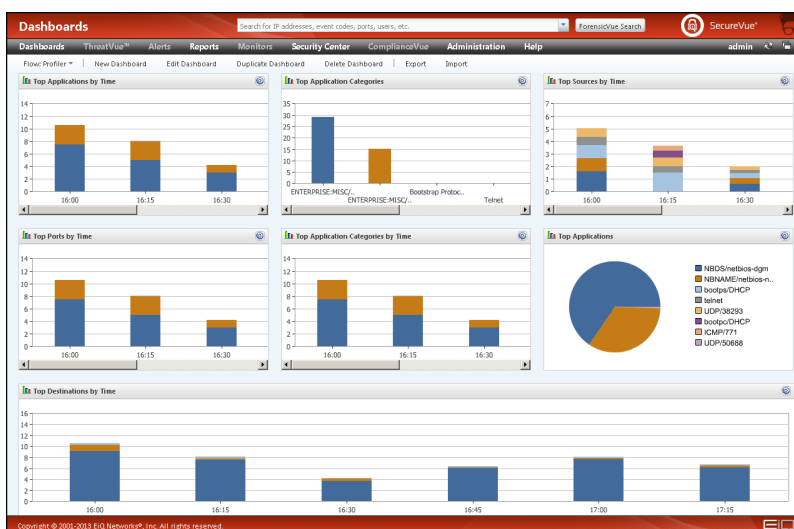
Continuous Security Intelligence™

Key Benefits

- Gain visual insight to identify patterns and potential issues
- Understand which users and applications utilize most bandwidth in order to troubleshoot and optimize the network
- React to incidents and outages faster or prevent them from happening in the first place
- Recognize anomalous network activity that could be part of an advanced persistent threat
- FlowVue is part of the EiQ SecureVue® platform, a modular solution that scales with your information security intelligence needs

FlowVue™ from EiQ Networks is a traffic monitoring solution that analyzes flow data from routers and switches throughout the network. FlowVue allows network administrators and information security personnel to quickly view network traffic patterns and bandwidth utilization by nodes, ports and interfaces. Detailed reporting is also available to sort flow data by time, application, source or destination. With support for multiple vendors and flow standards, FlowVue provides a robust network traffic analyzer in one central console.

Network flow data can be extremely valuable for both network administration and information security purposes. By establishing a baseline of normal activity, users can easily identify anomalies that might be signs of an operational issue, policy violation or security threat. Flow data can also provide valuable insights into bandwidth usage by nodes and applications, allowing system administrators to identify trends and optimize network performance. FlowVue includes an easy to use dashboard with visual tools that help make sense of network traffic. The solution also allows for regular reporting that can be reviewed on an ongoing basis for continuous improvements.



FlowVue ScreenShot

For more information visit www.eiqnetworks.com



Key Functions

Data Collection – FlowVue supports Netflow, JFlow and SFlow standards, and leading vendors like Cisco, Juniper and Foundry.

Comprehensive Reports – View network traffic by top ports, nodes, and interfaces. Reports can be run ad hoc or scheduled at regular intervals.

Bandwidth Usage by Application – Detailed reporting of network traffic created by each application. Sort results by application category, source, destination or time.

Bandwidth Usage by Source and Destination – Detailed reporting of network traffic by the source and destination. Quickly distills inbound and outbound traffic by port, application and time.

Flow Analysis Dashboard – Simple graphical interface that presents network flows in easy-to-read charts and graphs. Analyze traffic patterns and application bandwidth usage over time.

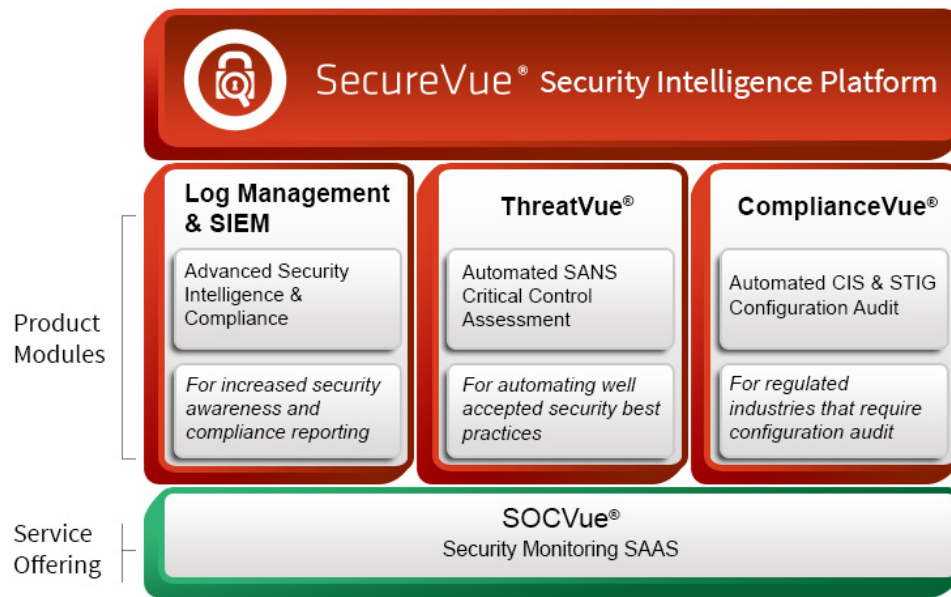
SecureVue Platform

SecureVue is a modular security intelligence solution that can be expanded as organizations face additional security or regulatory requirements. Also available:

Download FlowVue and other free tools at www.eiqnetworks.com

The FlowVue configuration for SecureVue is free-of-charge for up to 25 nodes. The following free tools are also available now:

- LogVue® - Log Management
- FIMVue™ - File Integrity Monitoring
- USBVue™ - USB Device Monitoring
- DiscoveryVue™ - Asset Discovery & Management
- VulnerabilityVue™ - Vulnerability Management
- PerformanceVue™ - Network Performance Monitoring
- EventVue™ - Network Event Monitoring



About EiQ Networks

EiQ Networks, a pioneer in simplified information security and compliance solutions and services, is transforming how organizations meet their security monitoring and compliance objectives. With SecureVue®, a continuous security intelligence platform, organizations can gain comprehensive security monitoring, critical security control assessment, configuration auditing, and compliance automation. For resource constrained organizations EiQ provides SOCVue, a continuous security monitoring software as a service (SaaS) offering.