



# EventVue is a network monitoring solution that displays events in real-time dashboards, helping users identify potential security threats



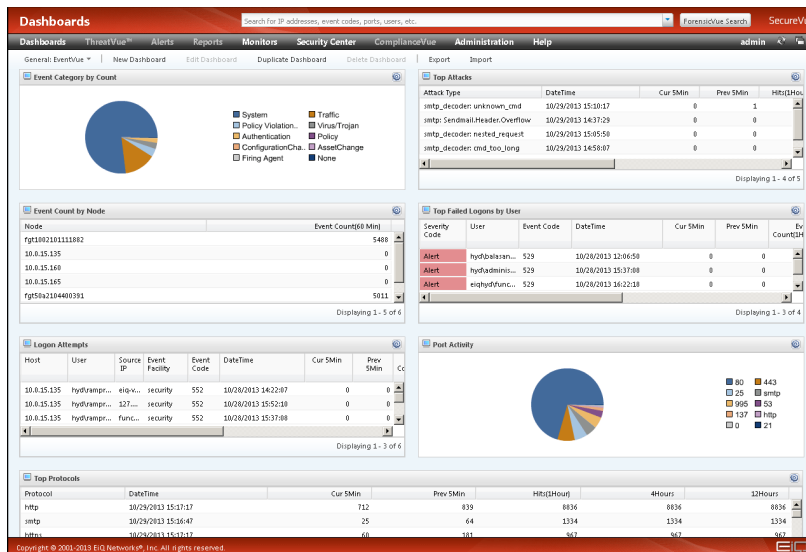
Continuous Security Intelligence™

EventVue™ from EIQ Networks provides the ability to collect and monitor event logs from a wide range of network devices such as routers, switches and firewalls, along with Windows and Linux workstations and servers. The solution is easy to setup and configure, and allows simple real-time event viewing. Events can be viewed and filtered as they are received in a tabular form, or users can take advantage of EventVue's out-of-the-box monitors and graphs that provide summary information of events.

Event monitoring is a key component to maintaining a secure network and complying with industry regulations. EventVue improves security awareness by collecting data from a wide range of sources, and presenting it in easy-to-read dashboards in real time. Users can quickly pinpoint security threats and policy violations, gaining critical reaction speed that can reduce the risk of a data breach. System and device messages can also assist administrators with network troubleshooting and optimization. EventVue provides tremendous value by centralizing all of these functions in one simple tool.

### Key Benefits

- Reduce complexity and overhead by aggregating all network and security event data in a single console
- Quickly identify network issues, system failures or potential security threats through real-time event monitors
- Gain insight across a wide range of devices and applications with event summaries that are easy to understand and provide actionable intelligence
- EventVue is part of the EIQ SecureVue® platform, a modular solution that scales with your information security intelligence needs



EventVue ScreenShot

For more information visit [www.eiqnetworks.com](http://www.eiqnetworks.com)



## Key Functions

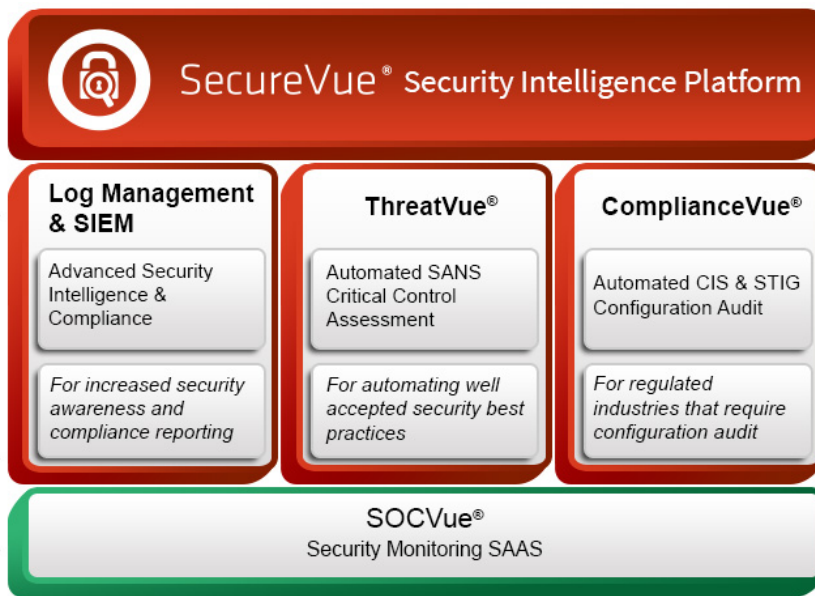
**Network Event Collection** – Automated data collection from a wide range of devices, workstations, servers, and applications from across the network. With extensive support for the leading technologies, EventVue provides a complete picture of network events.

**Real-Time Monitoring** – View and filter events in real time, including attacks, system failures or warnings, account, logon and password changes events.

**Event Analysis Dashboard** – Out-of-the-box graphs and dashboards help make sense of the flood of information generated by network devices and hosts. EventVue displays summary data in easy-to-read graphical formats.

## SecureVue Platform

SecureVue is a modular security intelligence solution that can be expanded as organizations face additional security or regulatory requirements. Also available:



Download EventVue and other free tools at [www.eiqnetworks.com](http://www.eiqnetworks.com)

The EventVue configuration for SecureVue is free-of-charge for up to 25 nodes. The following free tools are also available now:

- LogVue® - Log Management
- FIMVue™ - File Integrity Monitoring
- USBVue™ - USB Device Monitoring
- DiscoveryVue™ - Asset Discovery & Management
- FlowVue™ - Network Traffic Analyzer
- VulnerabilityVue™ - Vulnerability Management
- PerformanceVue™ - Network Performance Monitoring

## About EiQ Networks

EiQ Networks, a pioneer in simplified information security and compliance solutions and services, is transforming how organizations meet their security monitoring and compliance objectives. With SecureVue®, a continuous security intelligence platform, organizations can gain comprehensive security monitoring, critical security control assessment, configuration auditing, and compliance automation. For resource constrained organizations EiQ provides SOCVue, a continuous security monitoring software as a service (SaaS) offering.