



# ComplianceVue™ helps ensure proper configuration of networked systems to reduce risk of compromise

Security conscious organizations know that one of the most effective ways to increase information security is to ensure systems have been configured “properly”. Because of the dynamic configuration nature of networked system – it is important to automate the monitoring of system configuration to quickly flag any high risk changes. ComplianceVue, an add-on module to the SecureVue Continuous Security Intelligence platform, provides automated monitoring by continually assessing system configurations against an organization’s “gold standard”.

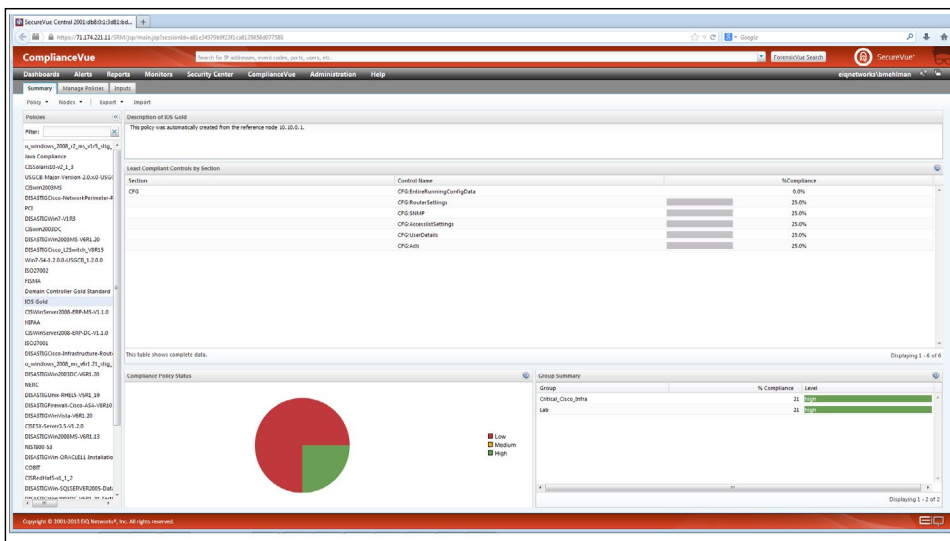
Configuration audit is a security best practice that identifies and helps remedy vulnerabilities caused by weak security settings and misconfigured systems. ComplianceVue automatically collects configuration data from across the computing environment and highlights any deviation from industry standard benchmarks including those provided by the Defense Information Systems Agency (DISA) or Center for Internet Security (CIS).



Continuous Security Intelligence™

### Key Benefits

- Improve cyber security posture with secure system configurations
- Implement and continuously monitor prescriptive configuration standards including CIS and DISA STIGs
- Lower risk via Identification of misconfigured systems, policy violations and unauthorized changes



For a product demonstration or evaluation, visit:  
[www.eiqnetworks.com](http://www.eiqnetworks.com)

Compliance Vue User Interface – Continuous Configuration Audit from a Single Console



## Key Features & Benefits

### Save Time with Automated Checks

- *ComplianceVue is saving organizations thousands of hours each year through automated compliance checks, without requiring an agent*

### Continuous View of Compliance vs. Point in Time

- *ComplianceVue reduces risk via more timely notification of risky configuration changes, far better than a quarterly or annual point in time audits*

### Dashboards & Reports

- *SecureVue offers dozens of out of the box dashboards and reports to display configuration data across the entire enterprise.*

### Compliance Alerts

- *ComplianceVue can be configured for timely notification of risky configuration changes including non-compliance with a gold standard baseline. These alerts can be sent through an email, trouble ticket, or SNMP trap.*

### Industry Standard and Custom Baselines

- *ComplianceVue can assess system configuration against industry standards like DISA STIGs and CIS policies or a custom baseline policy. With a few mouse-clicks, the solution can collect and compare system configurations against a gold standard baseline specific to an organizations needs wether the need is industry standards or custom.*

### Vendor Agnostic

- *ComplianceVue is vendor agnostic in that it provides configuration monitoring capabilities across your heterogeneous infrastructure without the need to consult multiple tools.*

## About EiQ Networks

EiQ Networks, a pioneer in continuous security intelligence and compliance solutions and services, is transforming how organizations identify threats, mitigate risks and enable compliance. Our flagship solution, SecureVue®, a continuous security intelligence platform, helps organizations proactively detects incidents, implement security best practices, and receive timely and actionable intelligence along with remediation guidance. Through a single console, SecureVue enables a unified view of an organization's entire IT infrastructure for continuous security monitoring, critical security control assessment, configuration auditing, and compliance automation. In addition, EiQ offers SOCVue, a security monitoring software as a service (SaaS) offering, provides 24x7 security operations to organizations that require security monitoring but lack resources or on-staff expertise to implement an effective security program.